

METRIC



298 FORT STREET
WINNIPEG, MANITOBA
R3C 1E5

CLIENT:
THE CITY OF WINNIPEG

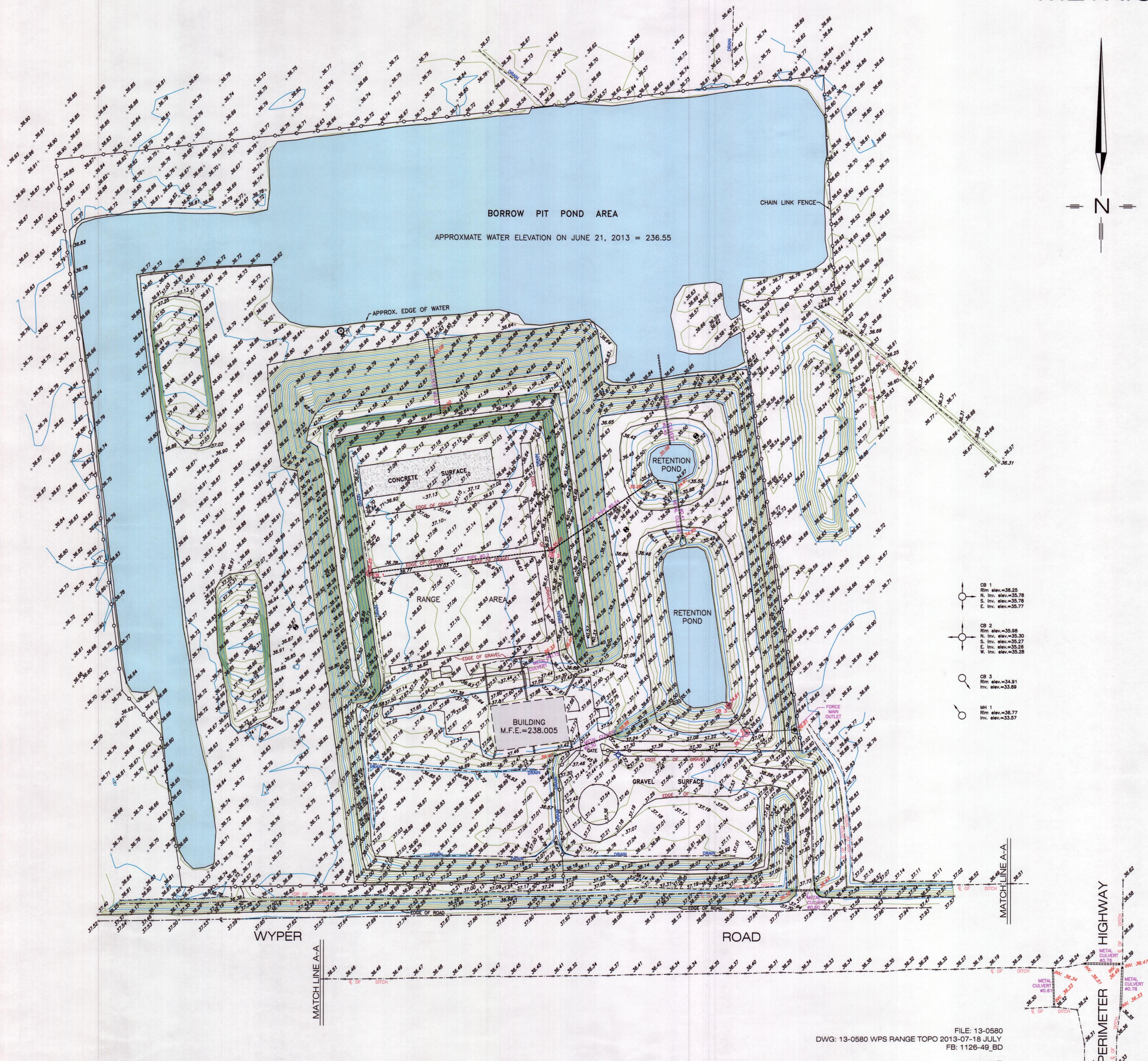
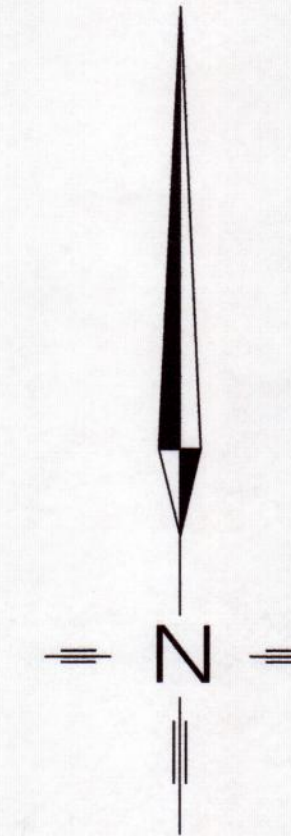
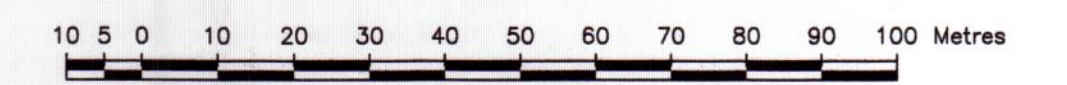
WYPER ROAD
WINNIPEG, MANITOBA

PLAN OF TOPOGRAPHIC SURVEY
OF PART OF
OUTER TWO MILES
PARISH OF ST. CHARLES

BEING
WINNIPEG POLICE SERVICE FIREARM
TRAINING FACILITY

CITY OF WINNIPEG
MANITOBA

SCALE - 1 : 1000



LEGEND

- Fences ————
- Fire Hydrant ————
- Test Holes ————
- Monitoring Well ————
- Culvert Invert Elevations ————
- Manhole w/ RIM Elevation ————
- Catch Basins w/ RIM Elevations ————

NOTES

All dimensions are in metres and may be converted to feet by multiplying by 3.28084 .
Elevations are referred to Geodetic Datum and are indicated thus ———— .
For Geodetic Elevations add 200.0 to all elevations shown.
Elevations are referred to City of Winnipeg Bench Mark No. 72-004, Elevation = 236.740m.
This survey was made between the 21st and 28th days of June, 2013.

BENCH MARKS	PUBLISHED ELEVATION	FIELD DETERMINED
69-007	236.577	236.572
72-004	236.740	236.740
85M409	237.913	237.898
74M594	233.888	233.876

- CB 1
Rim elev.=36.25
N. Inv. elev.=35.78
S. Inv. elev.=35.78
E. Inv. elev.=35.77
- CB 2
Rim elev.=35.98
N. Inv. elev.=35.30
S. Inv. elev.=35.27
E. Inv. elev.=35.26
W. Inv. elev.=35.28
- CB 3
Rim elev.=34.91
Inv. elev.=33.88
- MH 1
Rim elev.=36.77
Inv. elev.=33.57

FILE: 13-0580
DWG: 13-0580 WPS RANGE TOPO 2013-07-18 JULY
FB: 1126-49.BD
H.T.

SHOULD INFORMATION ON THE DIGITAL FILE DIFFER FROM THE INFORMATION SHOWN ON THE ORIGINAL HARD COPY, AS PROVIDED BY OUR FIRM, THE LATTER WILL GOVERN.

Michael E. Sippola, M.L.S.
DATED THIS 23rd DAY OF AUGUST, 2013